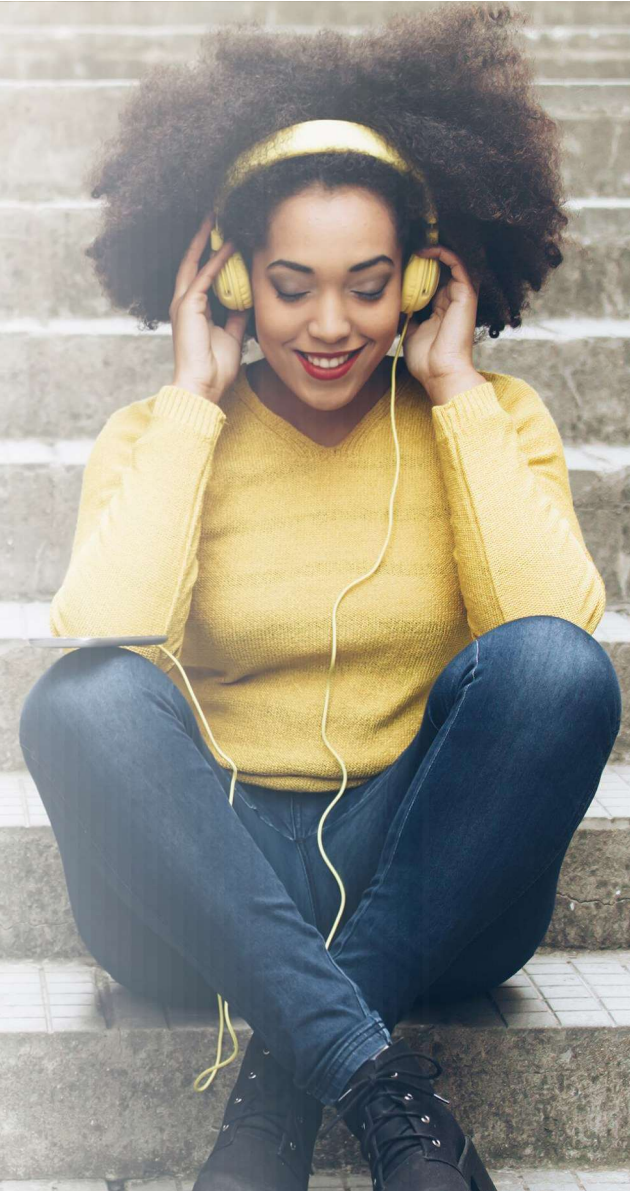


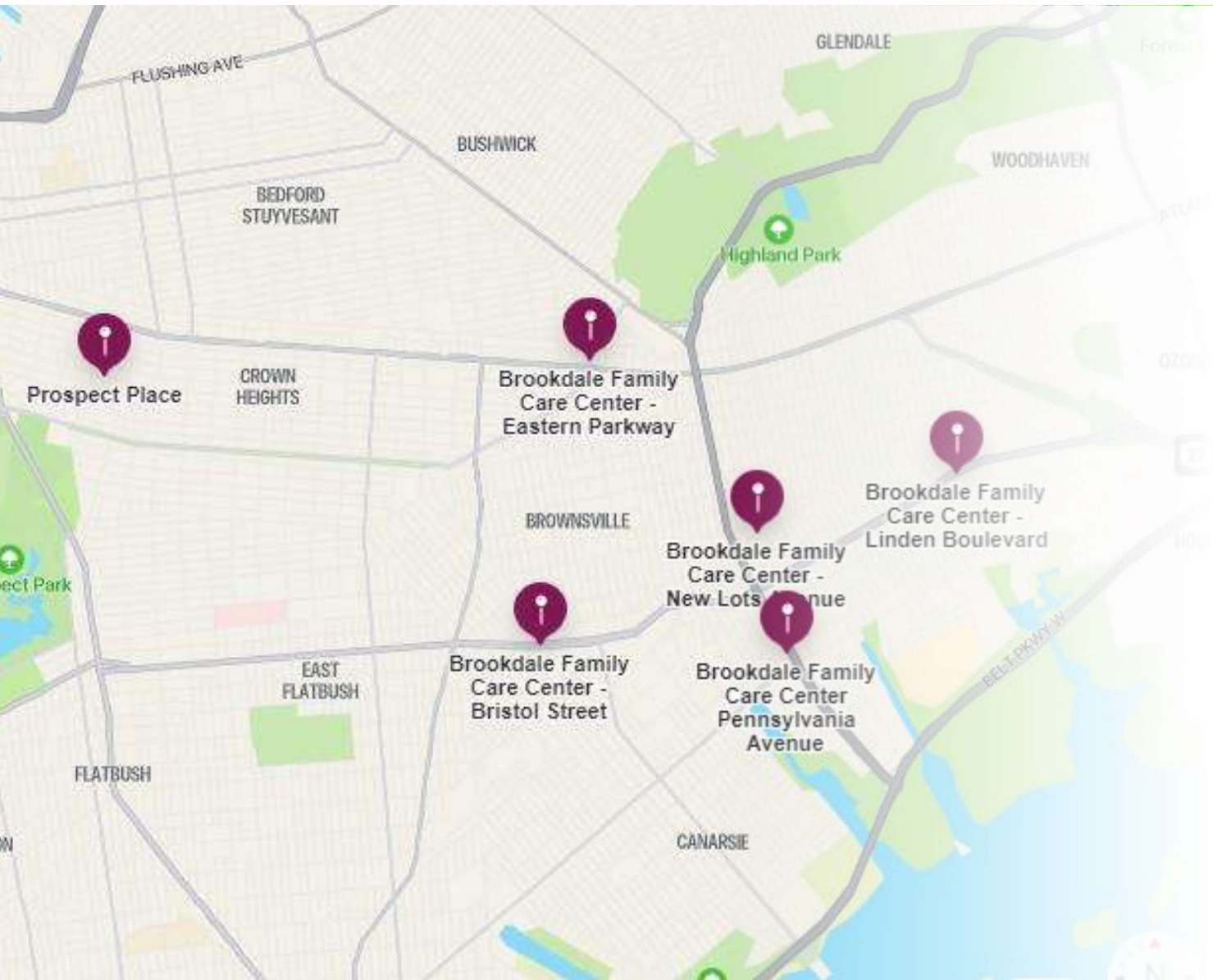


# Ambulatory Pediatrics

We address the unique developmental needs for our teens. Our aim is to provide high-quality comprehensive confidential medical care to our teens throughout the adolescent years, with a focus on respecting uniqueness, supporting physical and emotional growth and development, and give our teens the power to ultimately take ownership of their healthcare and life decisions.

At the Division of Adolescent Medicine, we promote an environment that acknowledge adolescents' need for confidentiality and trust, with emphasis on collaboration with family members and significant others whenever needed. Teens learn to practice self-advocacy in order to prepare them for a successful transition to adult healthcare. We welcome patients from all backgrounds and genders to our practice.





## Locations:

### **Brookdale Family Care Center-Bristol:**

1235 Linden Boulevard, Brooklyn, New York  
11212, United States.

[Tel: 718-240-5071](tel:718-240-5071)

### **Brookdale Family Care Center-Linden:**

2554 Linden Boulevard, Brooklyn, New York  
11208, United States

[Tel: 718-240-6473](tel:718-240-6473)

### **Brookdale Family Care Center-New Lots:**

465 New Lots Avenue, Brooklyn, New York  
11207, United States

[Tel: 718-240-8950](tel:718-240-8950)

### **Brookdale Family Care Center-East Pky:**

1883 Eastern Parkway, Brooklyn, New York  
11223, United States

[Tel: 718-240-8700](tel:718-240-8700)

### **Brookdale Family Care Center- Pennsylvania:**

1110 Granville Payne Ave, Brooklyn, New York  
11207, United States

[Tel: 718-649-5519](tel:718-649-5519)

### **Bishop Orris G. Walker, Jr. Health Care Center (Interfaith Medical Center):**

528 Prospect Pl, Brooklyn, York 11238, United  
States

[Tel: 718-613-6900](tel:718-613-6900)